

US Army Corps
of Engineers
Omaha District

COMPACT CHAPEL - SMALL ARMY STANDARD DESIGN

VARIOUS LOCATIONS (CONUS)

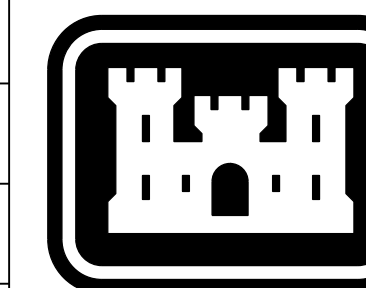
INDEX

DESIGN FILE	SHEET NO.	DESCRIPTION
RF_CESG-001.DGN	G-001	COVER SHEET AND INDEX
RF_CESC-101.DGN	C-101	SITE PLAN
RF_CESA-110.DGN	A-110	COMPOSITE FIRST FLOOR PLAN
RF_CESA-120.DGN	A-120	COMPOSITE SECOND FLOOR PLAN
RF_CESA-300.DGN	A-300	BUILDING SECTIONS
RF_CESI-110.DGN	I-110	COMPOSITE FIRST FLOOR FURNITURE PLAN
RF_CESI-111.DGN	I-111	ALTERNATE FURNITURE PLANS
RF_CESI-120.DGN	I-120	COMPOSITE SECOND FLOOR FURNITURE PLAN

THIS PROJECT WAS DESIGNED BY THE OMAHA DISTRICT OF THE US ARMY CORPS OF ENGINEERS. THE INITIALS OR SIGNATURES AND REGISTRATION DESIGNATIONS OF INDIVIDUALS APPEAR ON THESE PROJECT DOCUMENTS WITHIN THE SCOPE OF THEIR EMPLOYMENT AS REQUIRED BY ER 1110-1-8152.

THE FOLLOWING SIGNATURES BELOW INDICATE OFFICIAL APPROVAL OF ALL DRAWINGS IN THIS SET DATED _____

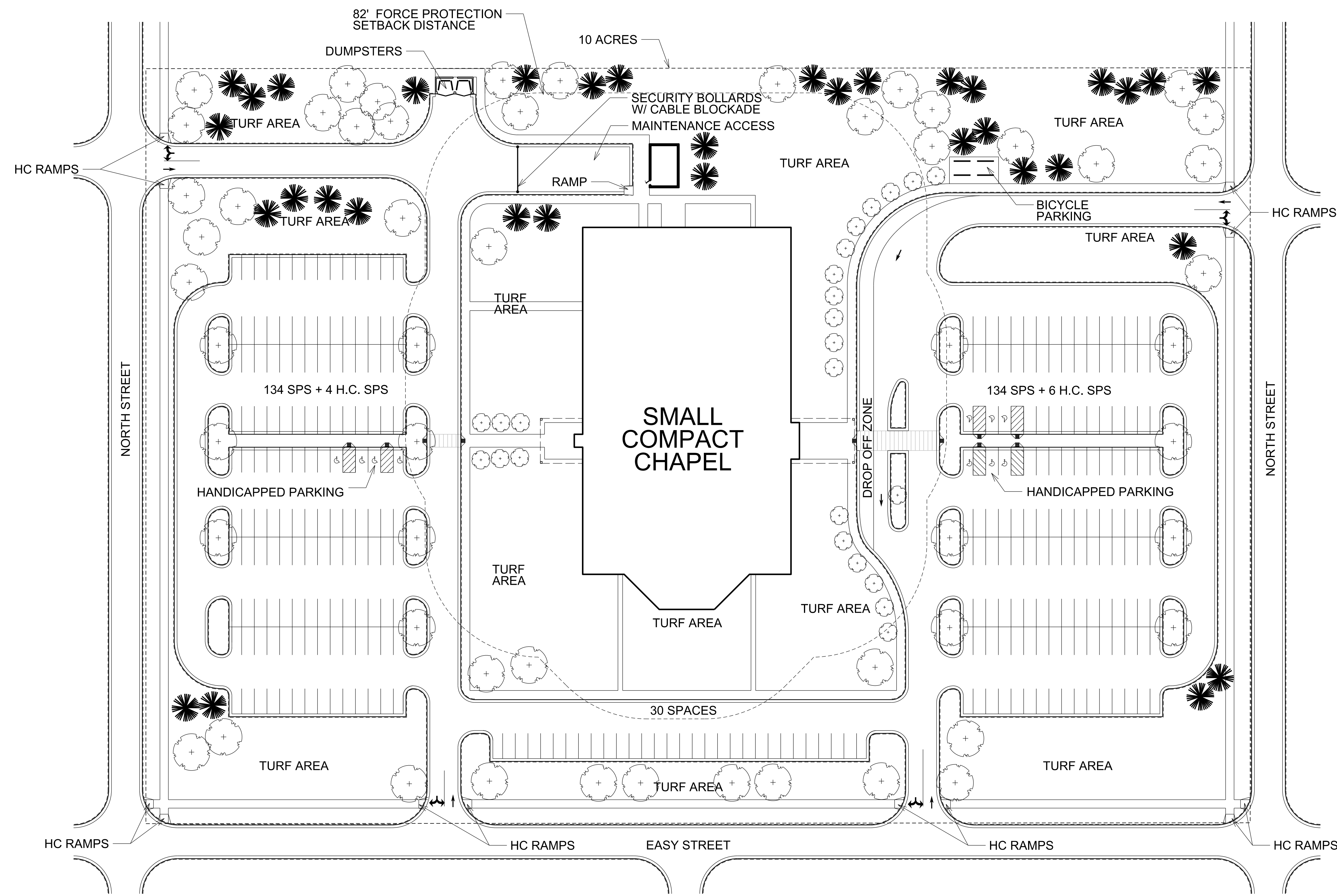
SUBMITTED BY:	RA	
CHIEF:	ARCH	SECTION
SUBMITTED BY:	PE	
CHIEF:	CIVIL	SECTION
SUBMITTED BY:	PE	
CHIEF:	ELECT	SECTION
SUBMITTED BY:	PE	
CHIEF:	ENVR	SECTION
SUBMITTED BY:	PE	
CHIEF:	MECH	SECTION
SUBMITTED BY:	PE	
CHIEF:	STRUCT/INTER	SECTION
SUBMITTED BY:	PE	
CHIEF:	GEO	SECTION
SUBMITTED BY:	CADD	
	PROJECT COORD.	



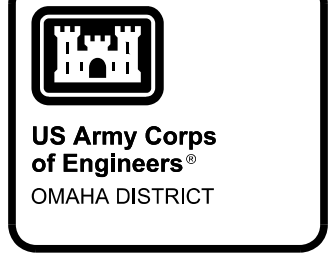
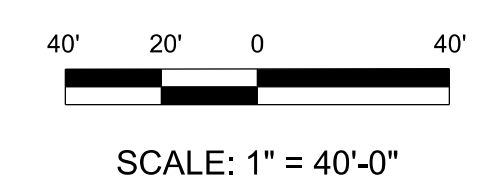
US Army Corps
of Engineers
Omaha District

1 2 3 4 5

D
C
B
A



SCC OCCUPANCY = 1020 (30% = 306 PARKING)
 PARKING SPACES SHOWN = 308 (INCL. 10 HC)



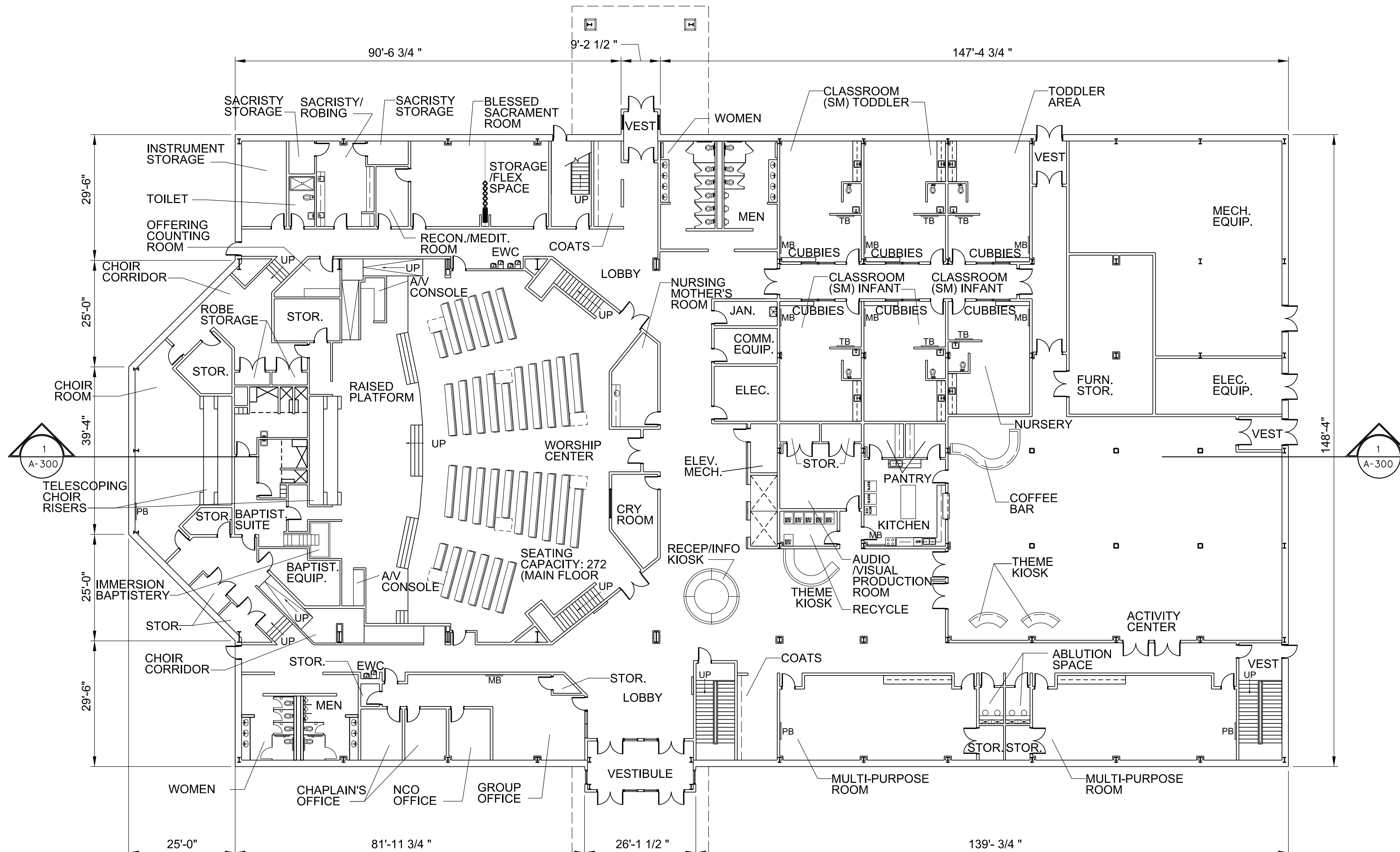
DATE	DESCRIPTION	MARK	DATE	APPR.

DESIGNED BY: X	DATE: 2013
DRAWN BY: X	SOLICITATION NO.:
CHECK BY: X	CONTRACT NO.:
SUBMITTED BY: X	FILE NUMBER:
PLOT SCALE: X	PLOT DATE: Z
FILE NAME: sheet_001.dgn	FILE NUMBER: Z
SIZE: 34x22"	

US ARMY ENGINEER DISTRICT
 CORPS OF ENGINEERS
 OMAHA, NEBRASKA

VARIOUS LOCATIONS
 3D BIM TRANSLATION - ARMY STANDARD DESIGN
 SMALL CHAPEL
 COMBINE PLAN SERIES
 SITE PLAN

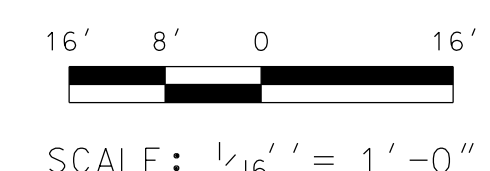
SHEET IDENTIFICATION
C-101



PLAN LEGEND

DCS	DIAPER CHANGING STATION
EWC	ELECTRIC WATER COOLER
MB	MARKER BOARD
PB	PRESENTATION BOARD
RB	RECYCLE BIN
TB	TACKBOARD
V	VENDING MACHINE

COMPOSITE FIRST FLOOR PLAN
SCALE: 1/16" = 1'-0"



DATE	DESCRIPTION	DATE	DESCRIPTION

DESIGNED BY: DATE: 2013	CUS BY: 2013	SUBMITTED BY: BRG	DESIGNATION NO.: X	CONTRACT NO.:
DRAWN BY: ACW	BRG	BRG	FILE NUMBER:	
DATE: 2013	2013			

VARIOUS LOCATIONS
3D BIM TRANSLATION - ARMY STANDARD DESIGN
SMALL CHAPEL
COMBINE PLAN SERIES

COMPOSITE FIRST FLOOR PLAN

SHEET IDENTIFICATION
A-110

1

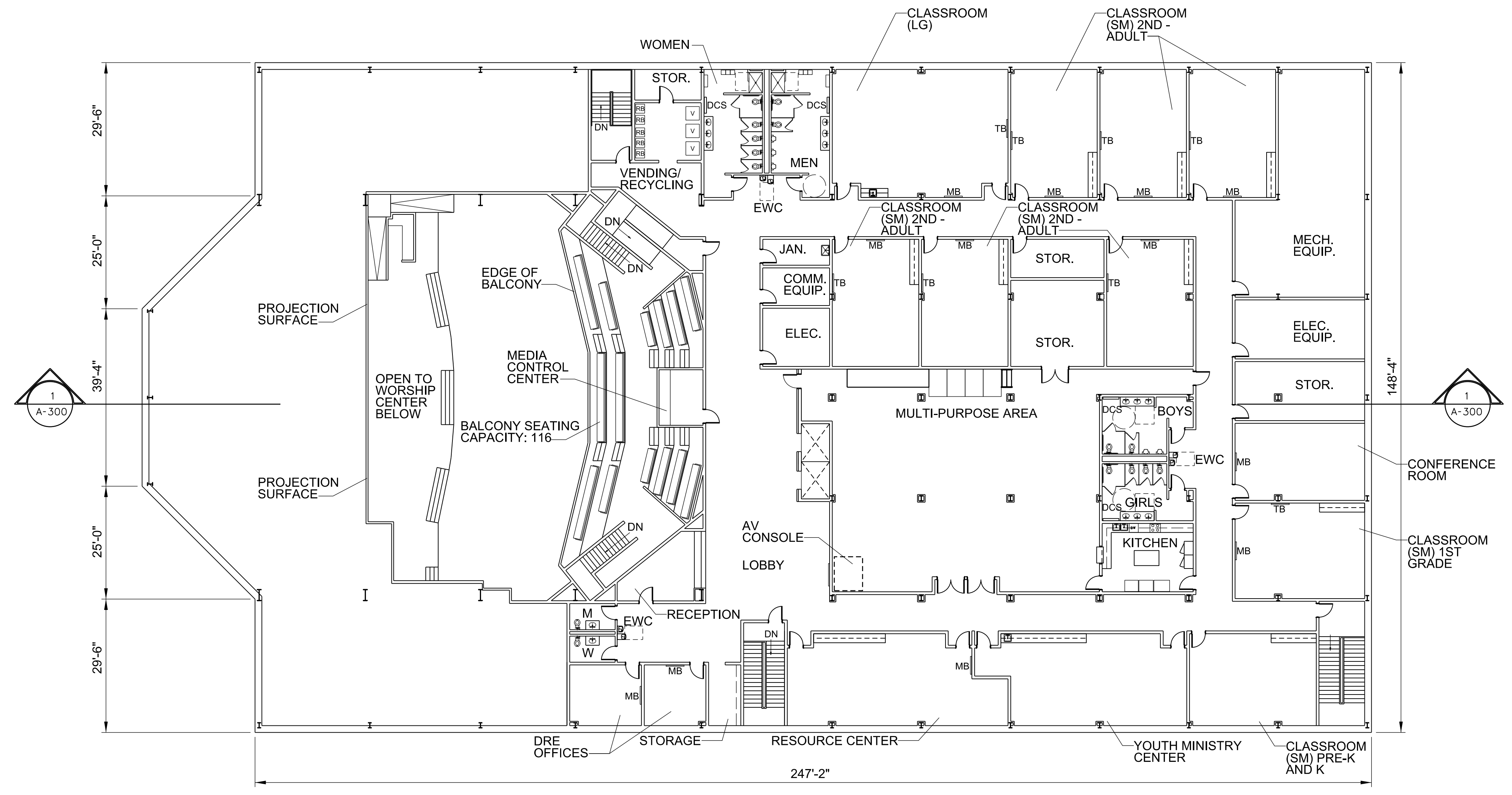
2

3

4

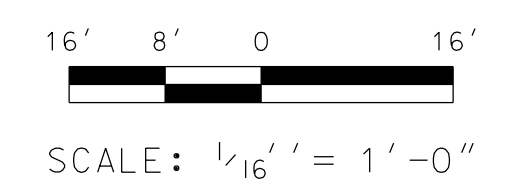
5

D
C
B
A



- PLAN LEGEND
- DCS DIAPER CHANGING STATION
 - EWC ELECTRIC WATER COOLER
 - MB MARKER BOARD
 - PB PRESENTATION BOARD
 - RB RECYCLE BIN
 - TB TACKBOARD
 - V VENDING MACHINE

COMPOSITE SECOND FLOOR PLAN
SCALE: 1/16" = 1'-0"



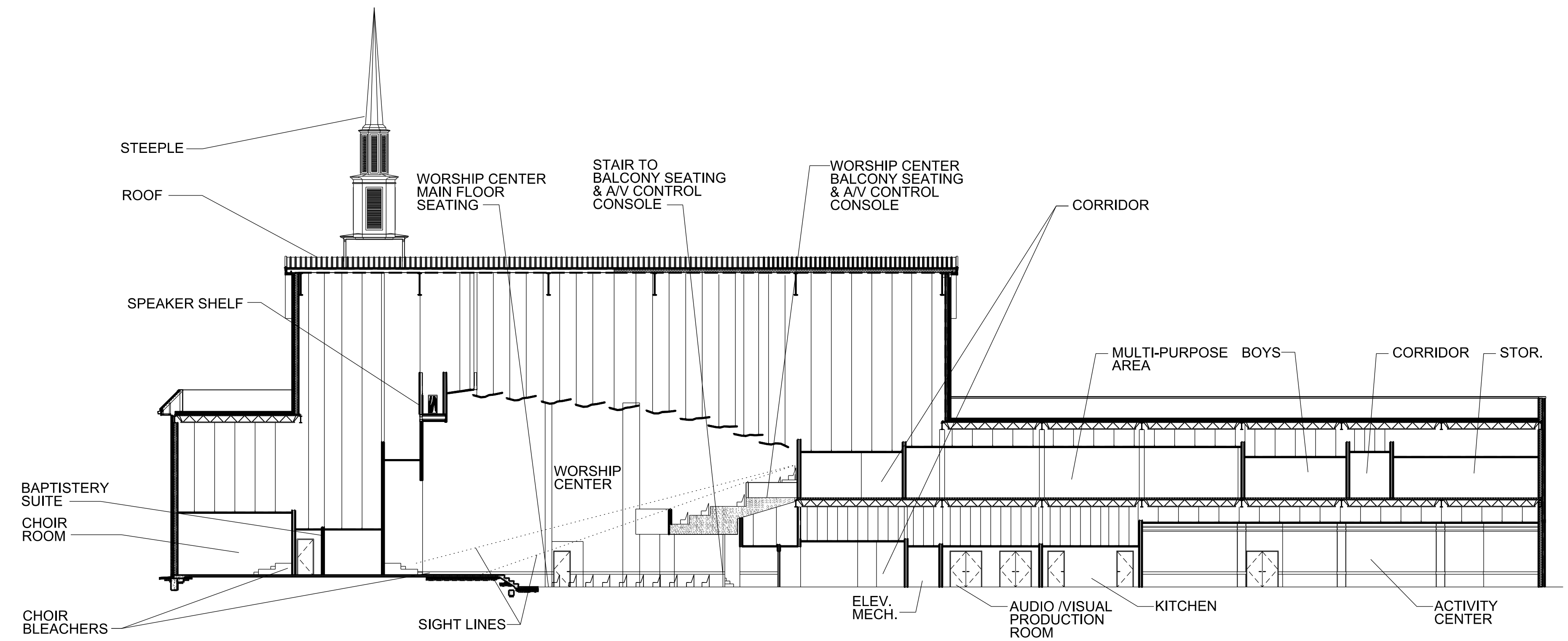
DATE	DESCRIPTION	MARK

DESIGNED BY: [blank]	DATE: 2013	SOLICITATION NO.:	CONTRACT NO.:
DRAWN BY: [blank]			
CHECKED BY: [blank]			

US ARMY ENGINEER DISTRICT
CORPS OF ENGINEERS
OMAHA, NEBRASKA

VARIOUS LOCATIONS
3D BIM TRANSLATION - ARMY STANDARD DESIGN
SMALL CHAPEL
COMBINE PLAN SERIES
COMPOSITE SECOND FLOOR PLAN

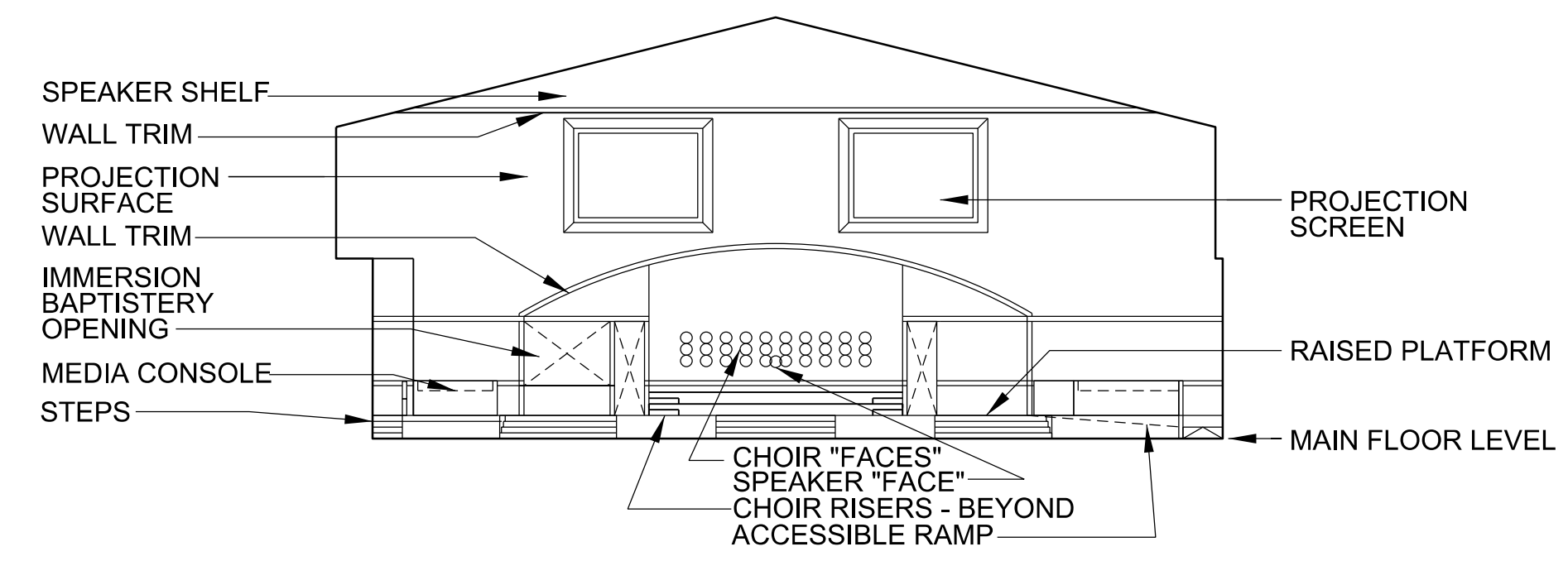
SHEET IDENTIFICATION
A-120



BUILDING SECTION

SCALE: 1/16" = 1'-0"

1
A-110



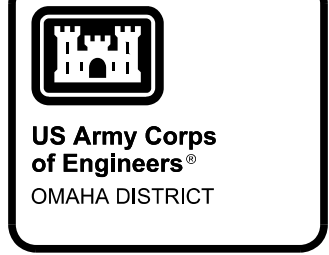
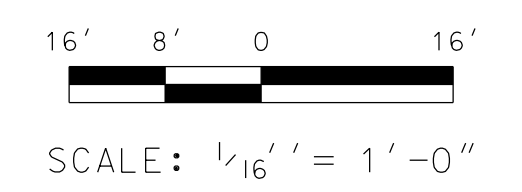
INTERIOR ELEVATION

SCALE: 1/16" = 1'-0"

2
A-110

GENERAL NOTES:

1. MANY ASPECTS OF THE INTERIOR ELEVATIONS ARE FLEXIBLE AND MAY BE MODIFIED ON A PROJECT BY PROJECT BASIS SO AS TO IMPROVE AESTHETIC OR VISUAL CONTINUITY. ENSURE THAT PROPER LINE OF SITE IS MAINTAINED BETWEEN THE AUDIENCE AND ALL OPERATIONAL PORTIONS OF THE RAISED PLATFORM. THIS INCLUDES THE PROJECTION SCREENS, THE CHOIR RISERS, THE BAPTISTRY, AND THE SPEAKING PLATFORM. FURTHERMORE, NONE OF THE PREVIOUSLY MENTIONED FUNCTIONS SHOULD VISUALLY SCREEN ANOTHER.
2. THIS BUILDING CROSS SECTION IS NOT BASED UPON A FULL DESIGN. WHILE STRUCTURE AND WALL COMPOSITION TRY TO REFLECT SOME SENSE FOR THESE FEATURES THEY ARE ESSENTIALLY ARBITRARY AS SHOWN. ANY PROJECT DESIGN MAY VARY SUBSTANTIALLY TO A LESSER DEGREE. THIS IS ALSO TRUE OF THE SPACES ENCLOSED BY THE STRUCTURE. SUCH VARIATION IS EXPECTED AND DOES NOT IMPLY FAILURE TO COMPLY WITH THE ARMY STANDARD DESIGN.



DATE	DESCRIPTION	MARK	APPR.

DESIGNED BY: BRG	DESIGNED BY: ACW	DESIGNED BY: ACW	DATE: 2013
DESIGNED BY: BRG	DESIGNED BY: ACW	DESIGNED BY: ACW	SOLICITATION NO.:
DESIGNED BY: BRG	DESIGNED BY: ACW	DESIGNED BY: ACW	CONTRACT NO.:
DESIGNED BY: BRG	DESIGNED BY: ACW	DESIGNED BY: ACW	FILE NUMBER:
DESIGNED BY: BRG	DESIGNED BY: ACW	DESIGNED BY: ACW	FILE NAME: sheet_001.dgn

US ARMY ENGINEER DISTRICT
CORPS OF ENGINEERS
OMAHA, NEBRASKA

VARIOUS LOCATIONS
3D BIM TRANSLATION - ARMY STANDARD DESIGN
SMALL CHAPEL
COMBINE PLAN SERIES
BUILDING SECTIONS

SHEET IDENTIFICATION
A-300

FURNITURE AND EQUIPMENT LEGEND

ECCLESIASTICAL EQUIPMENT:
 E01 ALTAR
 E02 ALTAR, SMALL
 E03 COMMUNION TABLE*
 E04 CRENDENCE TABLE*
 E05 OFFERTORY TABLE
 E06 LECTERN
 E07 PULPIT
 E08 PEW
 E09 STACKING PEW CHAIR WITH KNEELER
 E10 CHANCEL CHAIR
 E11 STACKING CHAIR FOR CHOIR
 E12 BAPTISMAL FONT
 E13 KNEELER/PRIE-DIEU WITH SCREEN
 E14 ALTAR RAIL UNIT
 E15 PORTABLE ALTAR

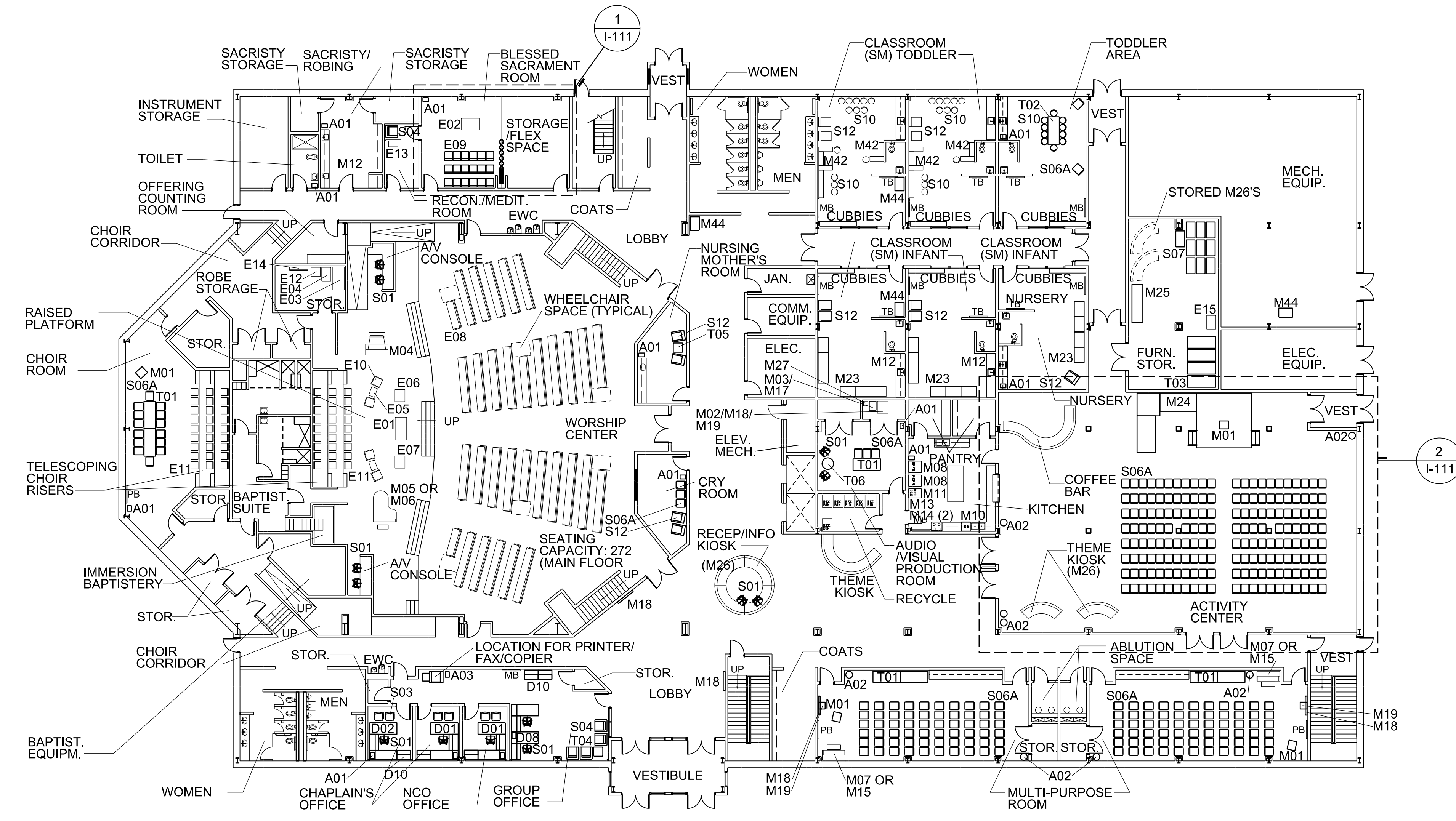
ACCESSORIES:
 A01 SMALL TRASH RECEPTACLE
 A02 LARGE TRASH RECEPTACLE
 A03 PAPER RECYCLE RECEPTACLE
 A04 TOILET RECEPTACLE

DESKS AND STORAGE:
 D01 U-SHAPED WORKSTATION, R-RETURN
 D02 U-SHAPED WORKSTATION, L-RETURN
 D03-D03A NOT USED
 D04 BOOKCASE
 D05-D07 NOT USED
 D08 L-SHAPED WORKSTATION WITH LEFT RETURN
 D09 NOT USED
 D10 LATERAL FILE W/ SHELVING

MISCELLANEOUS:
 M01 PORTABLE PODIUM
 M02 MEDIUM EQUIPMENT CART
 M03 SMALL EQUIPMENT CART
 M04 ORGAN
 M05 GRAND PIANO
 M06 BABY GRAND PIANO
 M07 UPRIGHT PIANO
 M08 REFRIGERATOR
 M09 RANGE
 M10 DISHWASHER
 M11 ICE MACHINE
 M12 UNDERCOUNTER REFRIGERATOR
 M13 MICROWAVE
 M14 WARMING DRAWER
 M15 KEYBOARD/SYNTHESIZER
 M16 OUTDOOR FURNITURE*
 M17 PORTABLE PROJECTOR
 M18 TV, FLAT SCREEN
 M19 MEDIA PLAYER
 M20-M22 NOT USED
 M23 CRIB
 M24 STAGE, LARGE
 M24A STAGE, SMALL
 M25 STAGE DOLLY
 M26 KIOSK
 M27 PORTABLE PROJECTION SCREEN
 M40 STORAGE CABINET
 M41 OPEN DISPLAY SHELVING
 M42 LOW DISPLAY SHELVING
 M43 MOBILE WORK ISLAND
 M44 CHILD CHECK-IN SYSTEM AND CART

SEATING:
 S01 DESK CHAIR
 S02 NOT USED
 S03 GUEST CHAIR
 S04 LOUNGE CHAIR
 S05 NOT USED
 S06 STACKING CHAIR, PLASTIC
 S06A STACKING CHAIR, UPH
 S07 STACKING CHAIR DOLLY (PLASTIC)
 S07A STACKING CHAIR DOLLY (UPH)
 S08 NOT USED
 S09 NOT USED
 S10 SMALL CHILDREN'S CHAIR
 S11 MEDIUM CHILDREN'S CHAIR
 S12 ROCKER/GLIDER
 S13 HIGH STOOL

TABLES:
 T01 MULTI-PURPOSE TABLE, 72" X 30"
 T02 CHILDREN'S TABLE
 T03 TABLE DOLLY (72" X 30" TABLE)
 T04 LOBBY END TABLE
 T05 END TABLE
 T06 30" DIA TABLE
 T08 CONFERENCE TABLE, 60" X 144"
 T21 72" DIA TABLE
 T22 36" DIA TABLE
 T23 CHILDREN'S CRESCENT TABLE



PLAN LEGEND

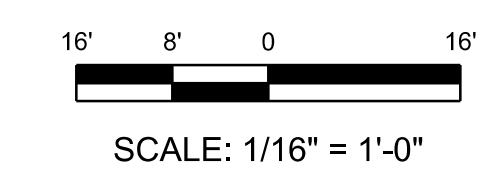
DCS	DIAPER CHANGING STATION
EWC	ELECTRIC WATER COOLER
MB	MARKER BOARD
PB	PRESENTATION BOARD
RB	RECYCLE BIN
TB	TACKBOARD
V	VENDING MACHINE

FIRST FLOOR COMPOSITE FURNITURE PLAN

SCALE: 1/16" = 1'-0"

NOTES:

- ITEMS IDENTIFIED WITH AN ASTERISK IN THE LEGEND ARE OPTIONAL. COORDINATE REQUIREMENT WITH THE USER.
- REFER TO THE STANDARD DESIGN FOR REQUIRED LOCATIONS OF TOILET RECEPTACLES.
- COORDINATE LOCATIONS AND QUANTITIES OF M44 CHILD CHECK-IN SYSTEM AND CARTS WITH THE USER. POSSIBLE LOCATIONS AND QUANTITIES ARE SHOWN BUT MAY VARY BASED ON USER REQUIREMENTS.
- PROVIDE FURNITURE TO SUPPORT PRINTER/FAX/COPIER IN GROUP OFFICE IF EQUIPMENT IS NOT FREESTANDING. COORDINATE REQUIREMENT WITH THE USER.
- PEW LAYOUT IS PROVIDED FOR INFORMATION ONLY. LAYOUT CAN BE REVISED AS LONG AS THE REQUIRED NUMBER OF SEATS ARE PROVIDED, PROJECT COST ISN'T INCREASED AND THE LAYOUT IS COORDINATED WITH AND APPROVED BY THE USER AND COS. LAYOUT SHALL COMPLY WITH THE STANDARD DESIGN PARAGRAPH 3.1.3 ACCESSIBILITY REQUIREMENTS AND PARAGRAPH 3.1.3 FIRE PROTECTION REQUIREMENTS.



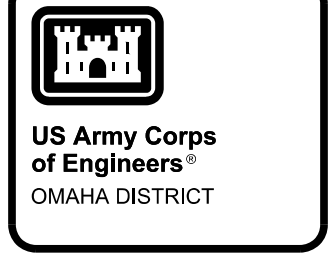
D
C
B
A

DATE	DESCRIPTION

DESIGNED BY: DATE: 2013	SOLICITATION NO.: Z	CONTRACT NO.: Z
DRAWN BY: DATE: 2013	FILE NUMBER: Z	
CHECKED BY: DATE: 2013		
SCALE: 1/16" = 1'-0"		

US ARMY ENGINEER DISTRICT
CORPS OF ENGINEERS
OMAHA, NEBRASKA

VARIOUS LOCATIONS
3D BIM TRANSLATION - ARMY STANDARD DESIGN
SMALL CHAPEL
COMBINE PLAN SERIES
FIRST FLOOR COMPOSITE
FURNITURE PLAN



FURNITURE AND EQUIPMENT LEGEND

ECCLESIASTICAL EQUIPMENT:
E01 ALTAR
E02 ALTAR, SMALL
E03 COMMUNION TABLE*
E04 CREDENCE TABLE*
E05 OFFERTORY TABLE
E06 LECTERN
E07 PULPIT
E08 PEW
E09 STACKING PEW CHAIR WITH KNEELER
E10 CHANCEL CHAIR
E11 STACKING CHAIR FOR CHOIR
E12 BAPTISMAL FONT
E13 KNEELER/PRIE-DIEU WITH SCREEN
E14 ALTAR RAIL UNIT
E15 PORTABLE ALTAR

ACCESSORIES:
A01 SMALL TRASH RECEPTACLE
A02 LARGE TRASH RECEPTACLE
A03 PAPER RECYCLE RECEPTACLE
A04 TOILET RECEPTACLE

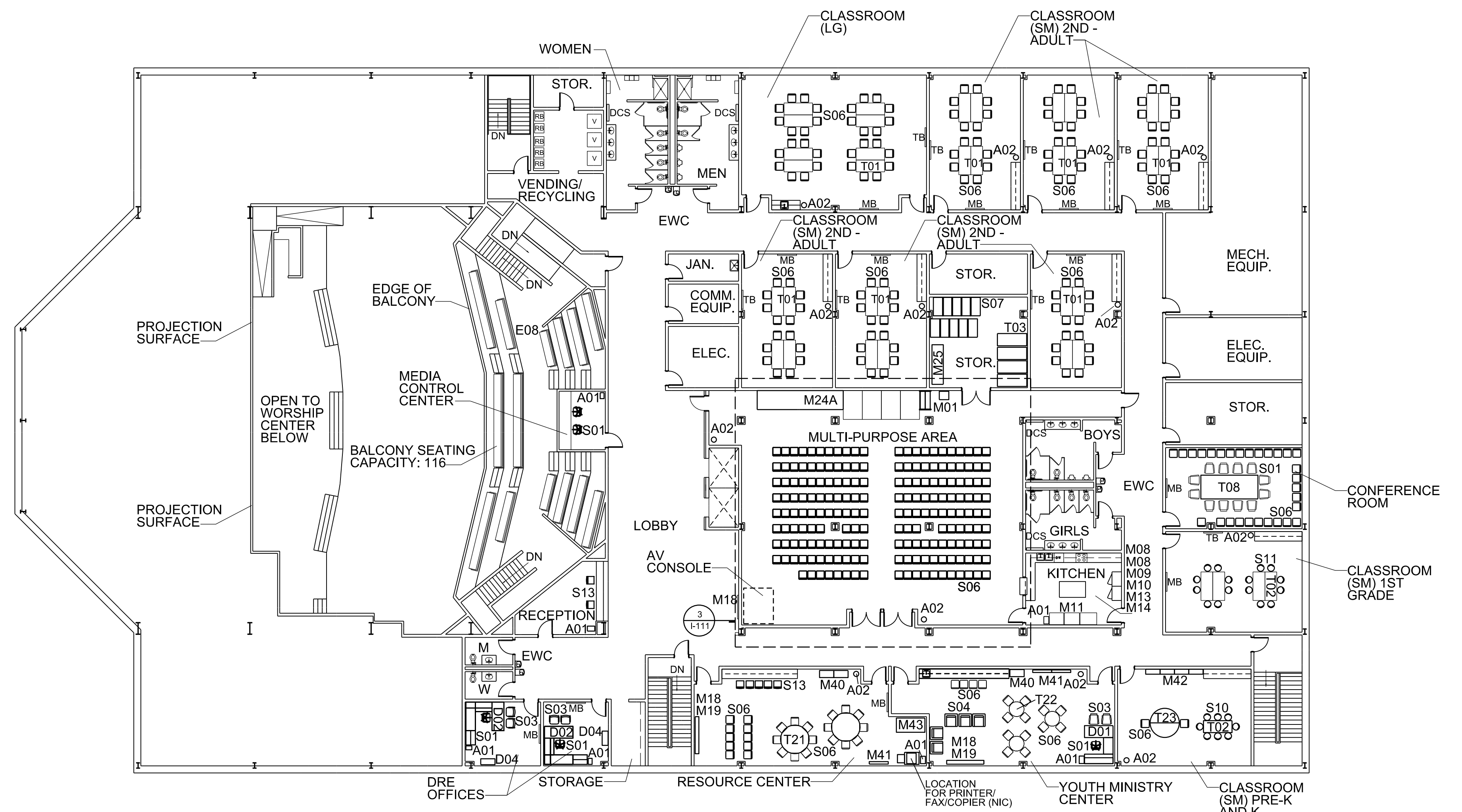
DESKS AND STORAGE:
D01 U-SHAPED WORKSTATION, R-RETURN
D02 U-SHAPED WORKSTATION, L-RETURN
D03-D03A NOT USED
D04 BOOKCASE
D05-D07 NOT USED
D08 L-SHAPED WORKSTATION WITH LEFT RETURN
D09 NOT USED
D10 LATERAL FILE W/ SHELVING

MISCELLANEOUS:
M01 PORTABLE PODIUM
M02 MEDIUM EQUIPMENT CART
M03 SMALL EQUIPMENT CART
M04 ORGAN
M05 GRAND PIANO
M06 BABY GRAND PIANO
M07 UPRIGHT PIANO
M08 REFRIGERATOR
M09 RANGE
M10 DISHWASHER
M11 ICE MACHINE
M12 UNDERCOUNTER REFRIGERATOR
M13 MICROWAVE
M14 WARMING DRAWER
M15 KEYBOARD/SYNTHESIZER
M16 OUTDOOR FURNITURE*
M17 PORTABLE PROJECTOR
M18 TV, FLAT SCREEN
M19 MEDIA PLAYER
M20-M22 NOT USED
M23 CRIB
M24 STAGE, LARGE
M24A STAGE, SMALL
M25 STAGE DOLLY
M26 KIOSK
M27 PORTABLE PROJECTION SCREEN
M40 STORAGE CABINET
M41 OPEN DISPLAY SHELVING
M42 LOW DISPLAY SHELVING
M43 MOBILE WORK ISLAND
M44 CHILD CHECK-IN SYSTEM AND CART

SEATING:
S01 DESK CHAIR
S02 NOT USED
S03 GUEST CHAIR
S04 LOUNGE CHAIR
S05 NOT USED
S06 STACKING CHAIR, PLASTIC
S06A STACKING CHAIR, UPH
S07 STACKING CHAIR DOLLY (PLASTIC)
S07A STACKING CHAIR DOLLY (UPH)
S08 NOT USED
S09 NOT USED
S10 SMALL CHILDREN'S CHAIR
S11 MEDIUM CHILDREN'S CHAIR
S12 ROCKER/GLIDER
S13 HIGH STOOL

TABLES:
T01 MULTI-PURPOSE TABLE, 72" X 30"
T02 CHILDREN'S TABLE
T03 TABLE DOLLY (72" X 30" TABLE)
T04 LOBBY END TABLE
T05 END TABLE
T06 30" DIA TABLE
T08 CONFERENCE TABLE, 60" X 144"
T21 72" DIA TABLE
T22 36" DIA TABLE
T23 CHILDREN'S CRESCENT TABLE

NOTES:
1. ITEMS IDENTIFIED WITH AN ASTERISK IN THE LEGEND ARE OPTIONAL. COORDINATE REQUIREMENT WITH THE USER.
2. REFER TO THE STANDARD DESIGN FOR REQUIRED LOCATIONS OF TOILET RECEPTACLES.
3. COORDINATE LOCATIONS AND QUANTITIES OF M44 CHILD CHECK-IN SYSTEM AND CARTS WITH THE USER. POSSIBLE LOCATIONS AND QUANTITIES ARE SHOWN BUT MAY VARY BASED ON USER REQUIREMENTS.
4. PEW LAYOUT IS PROVIDED FOR INFORMATION ONLY. LAYOUT CAN BE REVISED AS LONG AS THE REQUIRED NUMBER OF SEATS ARE PROVIDED. PROJECT COST ISN'T INCREASED AND THE LAYOUT IS COORDINATED WITH AND APPROVED BY THE USER AND COS. LAYOUT SHALL COMPLY WITH THE STANDARD DESIGN PARAGRAPH 3.1.3 ACCESSIBILITY REQUIREMENTS AND PARAGRAPH 3.13 FIRE PROTECTION REQUIREMENTS.

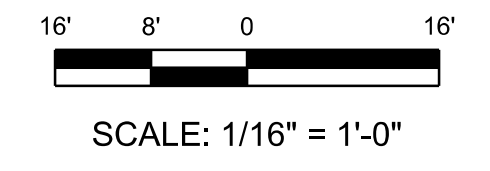


SECOND FLOOR COMPOSITE FURNITURE PLAN

SCALE: 1/16" = 1'-0"

PLAN LEGEND

- DCS DIAPER CHANGING STATION
- EWC ELECTRIC WATER COOLER
- MB MARKER BOARD
- PB PRESENTATION BOARD
- RB RECYCLE BIN
- TB TACKBOARD
- V VENDING MACHINE



DATE	APPR.	DATE	APPR.

DESIGNED BY: [blank]	DATE: 2013	SOLICITATION NO.: [blank]
DRAWN BY: [blank]	CUS. BY: [blank]	CONTRACT NO.: [blank]
LOBBY: [blank]	WFB	FILE NUMBER: [blank]
SUBMITTED BY: [blank]	WFB	PLOT DATE: [blank]
		PLOT DATE: [blank]
		FILE NAME: [blank]

US ARMY ENGINEER DISTRICT
CORPS OF ENGINEERS
OMAHA, NEBRASKA

VARIOUS LOCATIONS
3D BIM TRANSLATION - ARMY STANDARD DESIGN
SMALL CHAPEL
COMBINE PLAN SERIES
SECOND FLOOR COMPOSITE
FURNITURE PLAN

SHEET IDENTIFICATION
I-120

D

C

B

A